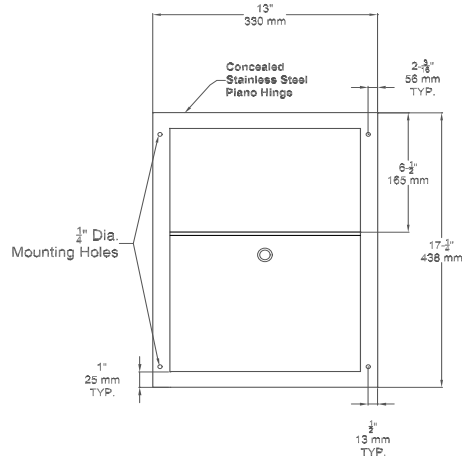




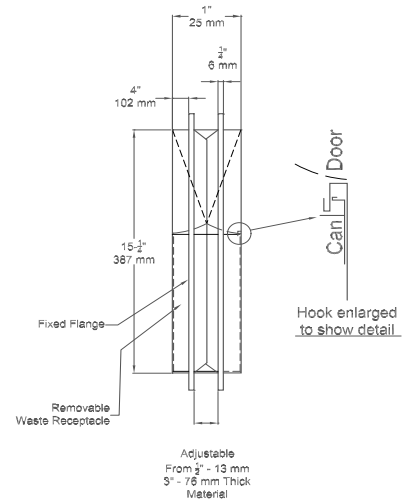
ND-421-200

Technical Data Sheet

Sanitary Napkin Disposal Partition Mounted



Front View



Side View

MATERIALS: The unit is fabricated of 18 and 22 gauge 18-8 type 304 stainless steel with No. 4 satin finish.

SPECIFICATIONS: The unit is fabricated of 18 and 22 gauge 18-8 type 304 stainless steel with No. 4 satin finish and is all welded construction. The door is mounted with continuous stainless steel piano hinge making it warp free and it is fitted with a tumbler lock. The door opens by user pushing on door facing and is self closing. The user pushes door and deposits waste material into unit. The stainless steel inner container is removable for servicing and is emptied by removing waste/trash bag from can.

CAPACITY: 1.2 gallons (4.6L)

OVERALL SIZE: 13" W x 17 1/4" H x 4" D
(330 mm W x 438 mm H x 102 mm D)

PARTITION OPENING: 11 1/4" W x 15 5/8" H
(286 mm W x 397 mm H)

INSTALLATION: Provide partition opening is as 1/2" (13 mm) to 1 1/4" (32 mm) deep with opening to be 11 1/4" W x 15 5/8" H (286 mm W x 397 mm H). The unit is to be placed firmly in partition opening making sure that flange is tight against the surface then secure to partition with screws. The average suggested mounting is 34" (864 mm) above finished floor to top of unit.



The ADA mounting is 28" (711 mm) above finished floor to top of unit. The hinged panels covering the waste receptacle openings should not require more than 5 lbs. of force to open.

The manufacturer reserves the right, without formal notification, to implement changes to the design and dimensions.
© 2008 Columbia Accessories
Edition: ND-421-200/001



PO Box 181, Columbia, SC 29202
Phone: 1-866-820-3579 Fax: 1-866-317-2786
Web Site: <http://www.natpart.com>