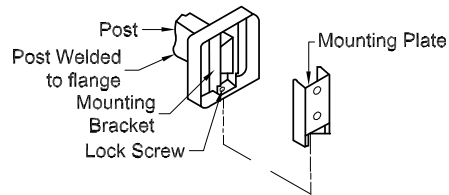
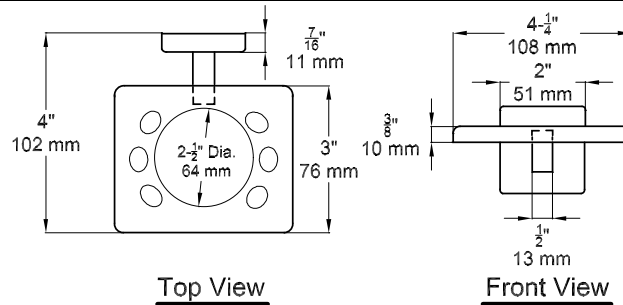


**Tumbler And Toothbrush Holder
Surface Mounted**



MATERIALS: Tumbler and Toothbrush Holder fabricated of alloy 18-8 stainless steel type 304. Holder tray to be made of seamless construction

OVERALL SIZE: 4 1/4" W x 1 31/32" H x 4" D
(108 mm W x 50 mm H x 104 mm D)

SPECIFICATIONS: Tumbler and Toothbrush Holder to be fabricated of alloy 18-8 stainless steel type 304. Holder tray to be made of seamless construction with a 2 1/2" diameter hole that holds a tumbler and slots holding six standard toothbrushes. Support post will be 1" x 1/2" rectangular tubing with formed mounting flange and bracket welded on end. Wall mounting plate to be included. A stainless steel set screw to be provided on bottom perimeter of flange to lock unit to mounting plate. Mounting hardware will be provided. Bright/Polished surface finish.

INSTALLATION: Surface mount unit to wall, using No 10 self-tapping screws. Hang flange and post assembly on mounting plate, and tighten set screws supplied to lock unit to plate. For general utility mount unit with top of holder tray 8" to 12" above vanity basin. Screws are not provided by manufacturer.



ADA Accessibility Guidelines: The unit is to be installed so that dispenser slot is 54" maximum above finished floor if clear floor side reach access is provided or 48" maximum above finished floor if clear floor forward reach access is provided or 46" maximum above finished floor if side reach over an obstruction such as a vanity is only provided.