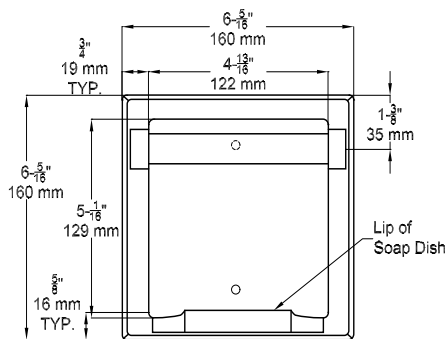




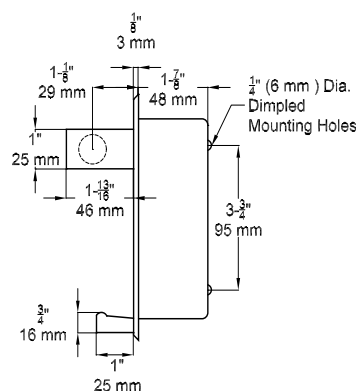
**SD-562-200**

**Technical Data Sheet**

**Soap Holder with Utility Bar  
Recessed**



Front View



Side View

**MATERIALS:** Recessed Mounted Soap Dish with Bar to be fabricated of alloy 18-8 stainless steel, type 304, No 22 gauge, of one piece construction, drawn and seamless.

**OVERALL SIZE:** 6 5/16" W x 6 5/16" H x 3 7/8" D  
(160 mm W x 160 mm H x 97 mm D)

**WALL OPENING:** 4 15/16" W x 5 3/16" H x 1 7/8" D  
(125 mm W x 132 mm H x 48 mm D)

**SPECIFICATIONS:** Recessed Mounted Soap Dish with Bar to be fabricated of alloy 18-8 stainless steel, type 304, No 22 gauge, of one piece construction, drawn and seamless. Back shell will have (2) perforated lugs for wet wall anchoring or (2) dimpled holes for dry wall installation as chosen. A stainless steel raised lip shall be provided to prevent soap from slipping out of holder. Bar shall be held permanently between (2) posts at top of unit. All exposed surfaces shall be bright finish.

**INSTALLATION:** Apply grout to back of unit and on perforated lugs and then push unit into RWO. Set flanges flush with face of finished wall. Dry wall installation: Fasten unit to wall opening with # 10 screws through dimpled holes at back of shell. For general utility mount unit 52" (152 mm) above finished floor or 6" (152 mm) above basin. Screws are not provided by manufacturer.



**ADA Accessibility Guidelines:** The unit is to be installed so that the soap shelf is 48" (1219 mm) maximum above finished floor in showers or over vanity basins and 36" (915 mm) maximum above finished floor in bathtubs.

The manufacturer reserves the right, without formal notification, to implement changes to the design and dimensions.  
 © 2008 Columbia Accessories  
 Edition: SD-562-200/001



PO Box 181, Columbia, SC 29202  
 Phone: 1-866-820-3579 Fax: 1-866-317-2786  
 Web Site: <http://www.natpart.com>