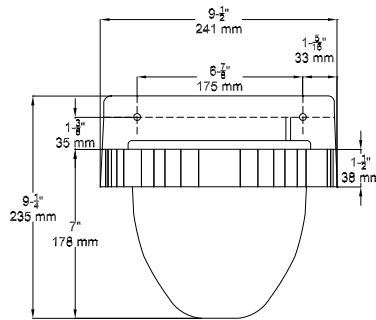




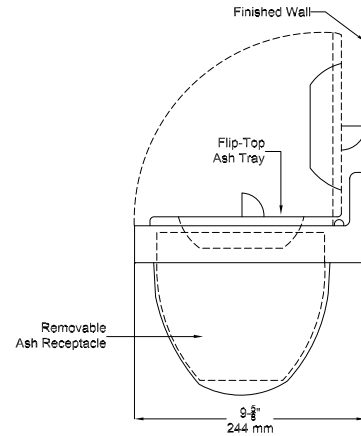
AU-111-200

Technical Data Sheet

ASH URN – WALL SURFACED MOUNTED



Elevation



Side View

MATERIALS:

Ash Urn - Fabricated of alloy 18-8 stainless steel, type 304, 22 gauge. No. 4 satin finish surfaces.

Hinged Top – Fabricated of alloy 18-8 stainless steel, type 304, 22 gauge. No. 4 satin finish surfaces.

Waste Compartment – Seamless aluminum construction.

Mounting Bracket – die cast aluminum.

SPECIFICATIONS: Type 304, stainless steel with satin finish, aluminum mounting bracket and receptacle, flip top ashtray hinges to urn for vandal proof installation. Entire unit has satin finish.

DIMENSIONS: 9 1/4" W x 8 1/4" H x 9 5/8" D
(235 mm W x 210 mm H x 245 mm D)

OPERATION: Ashes are dispensed into waste container just beneath ash bin. The push lever opens ash bin allowing ashes to be dumped into the waste compartment. The waste compartment is removable for emptying, cleaning and easy maintenance.

INSTALLATION: Ash urn is mounted to wall and secured with mounting screws. Holes in mounting brackets are provided for proper hanging. Bracket holds urn casing in place.

The manufacturer reserves the right, without formal notification, to implement changes to the design and dimensions.
© 2008 Columbia Accessories
Edition: AU-111-200/001



PO Box 181, Columbia, SC 29202
Phone: 1-866-820-3579 Fax: 1-866-317-2786
Web Site: <http://www.natpart.com>